

Moving Tasmania towards the new ocean paradigm: reflections

Emily Ogier

Resolving the right-fit for rights & instruments

Resolving marine tenure rights for the Tasmanian Aboriginal community.

Ensuring instruments which match security of access rights with responsibilities for generating sovereign funds for collective benefit and future risk management.



The poster features a yellow background with blue wavy lines representing water. At the top left, there are three blue birds in flight. At the top right, there is a stylized orange sun with rays. A starburst graphic on the left contains the text 'kipli / lunch provided!'. The title 'TAYARITJA SEA COUNTRY COMMUNITY WORKSHOP' is prominently displayed in bold black letters. Below the title, an invitation text states: 'Aboriginal community members are invited to a workshop to discuss creating a tayaritja/Bass Strait Sea Country Indigenous Protected Area (IPA)'. A table lists three workshop sessions with their respective times, dates, and locations. To the right of the table, a dark orange rounded rectangle contains the heading 'What we'll yarn about:' followed by a bulleted list of topics. At the bottom left, there is a small map of Tasmania with the Australian Aboriginal flag overlaid, and contact information for Zoe Cozens, the IPA Coordinator. The bottom right corner features a decorative illustration of coral and seaweed.

TAYARITJA SEA COUNTRY COMMUNITY WORKSHOP

Aboriginal community members are invited to a workshop to discuss creating a tayaritja/Bass Strait Sea Country Indigenous Protected Area (IPA).

kipli / lunch provided!

12 pm - 5 pm	14 Nov 2022	Launceston Board Room TAC Launceston
12 pm - 5 pm	15 Nov 2022	Community Room TAC pataway/Burnie
10 am - 3 pm	3 Dec 2022	Lady Barron Community Hall Flinders Island

What we'll yarn about:

- How we will establish the sea country area
- What you value most about the sea country
- What your concerns are
- The health of tayaritja Sea Country
- Management options
- The lungtalanana/Clarke Island repatriation animal project

 For more information contact:
Zoe Cozens, Sea Country IPA Coordinator
(03) 6234 0752



Enabling adaptive spatial planning structures and not rigidity

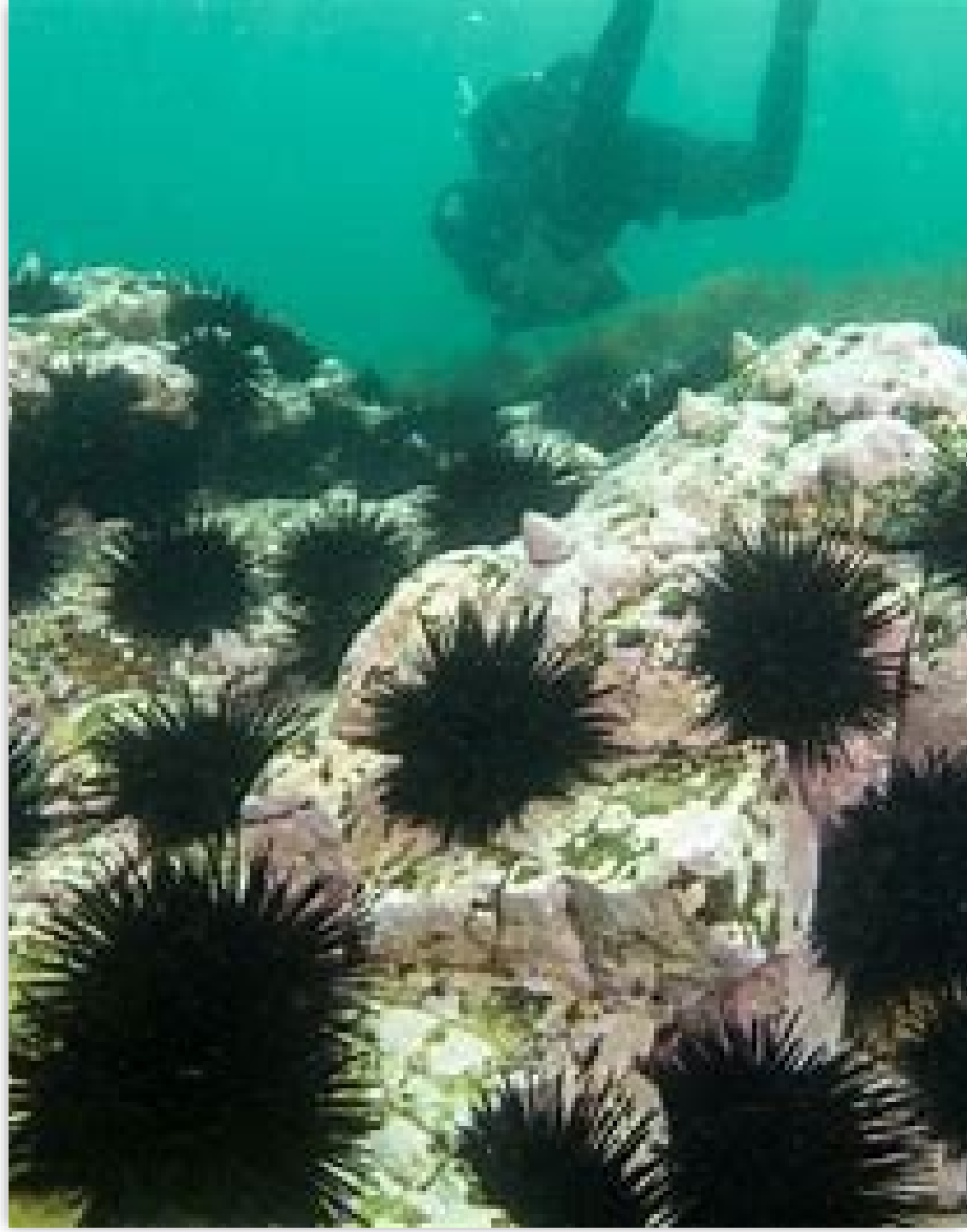
This will require 'fungible' frameworks and spatial lines (zones) where necessary, working to protect the health of ecosystem functions.

And this means broadening the focus from primarily protecting habitats or species, given rapidly changing ocean conditions.

Enabling action not holistic inertia

More integrated management needs greater capacity and capability that is both hard (in law) and soft (in people, processes, relationships) for greater cross-organisation coordination and integrated actions.

And this calls for avoiding undue reliance on fixed decision rules and binding legal frameworks so rapid action can be legally enabled but not over-determined.





YOUR MARINE
VALUES
PUBLIC REPORT 2013



Engaging early and locally

This requires structured regional and interest-based engagement which is anticipatory and early in planning processes.