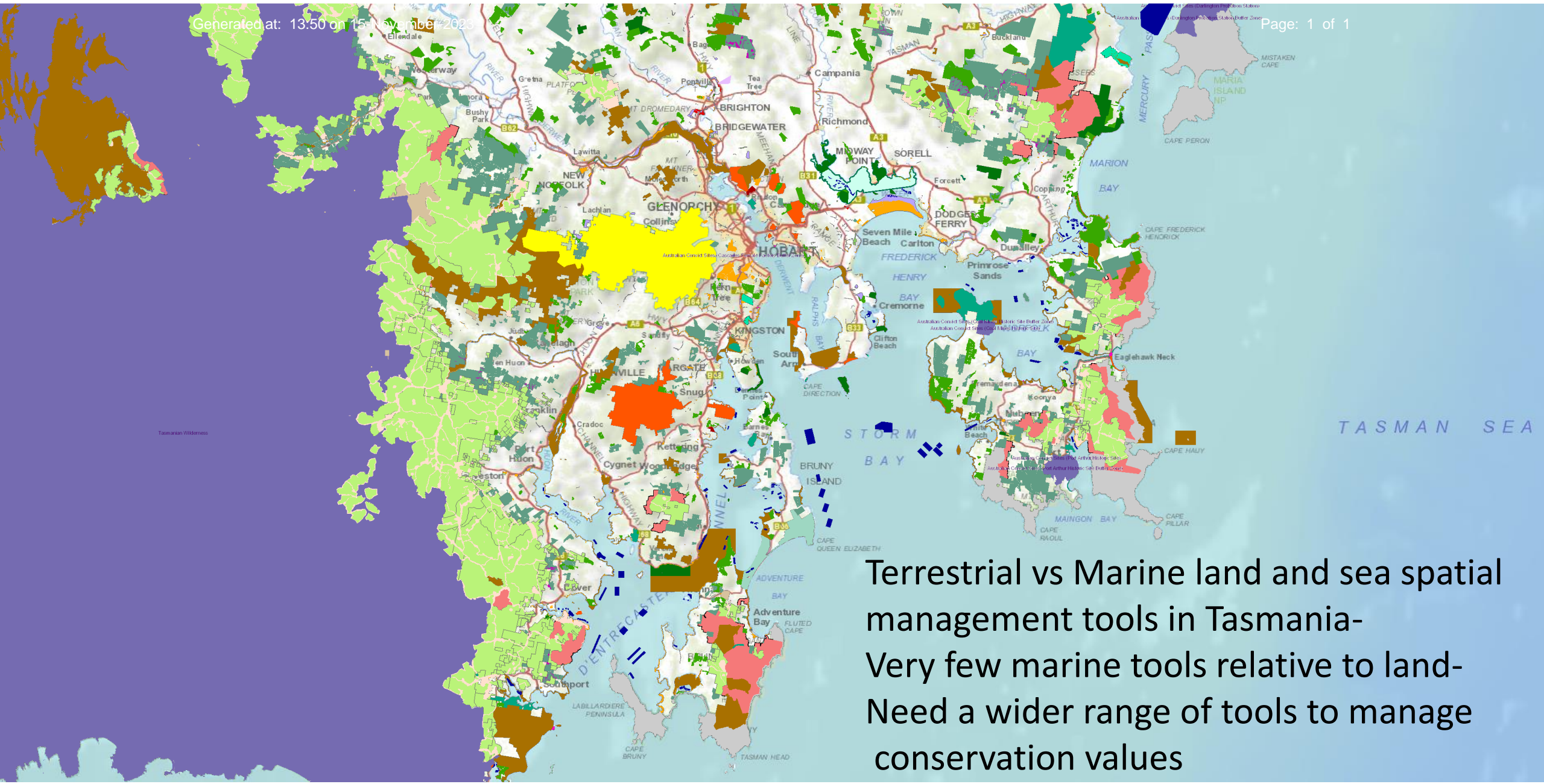
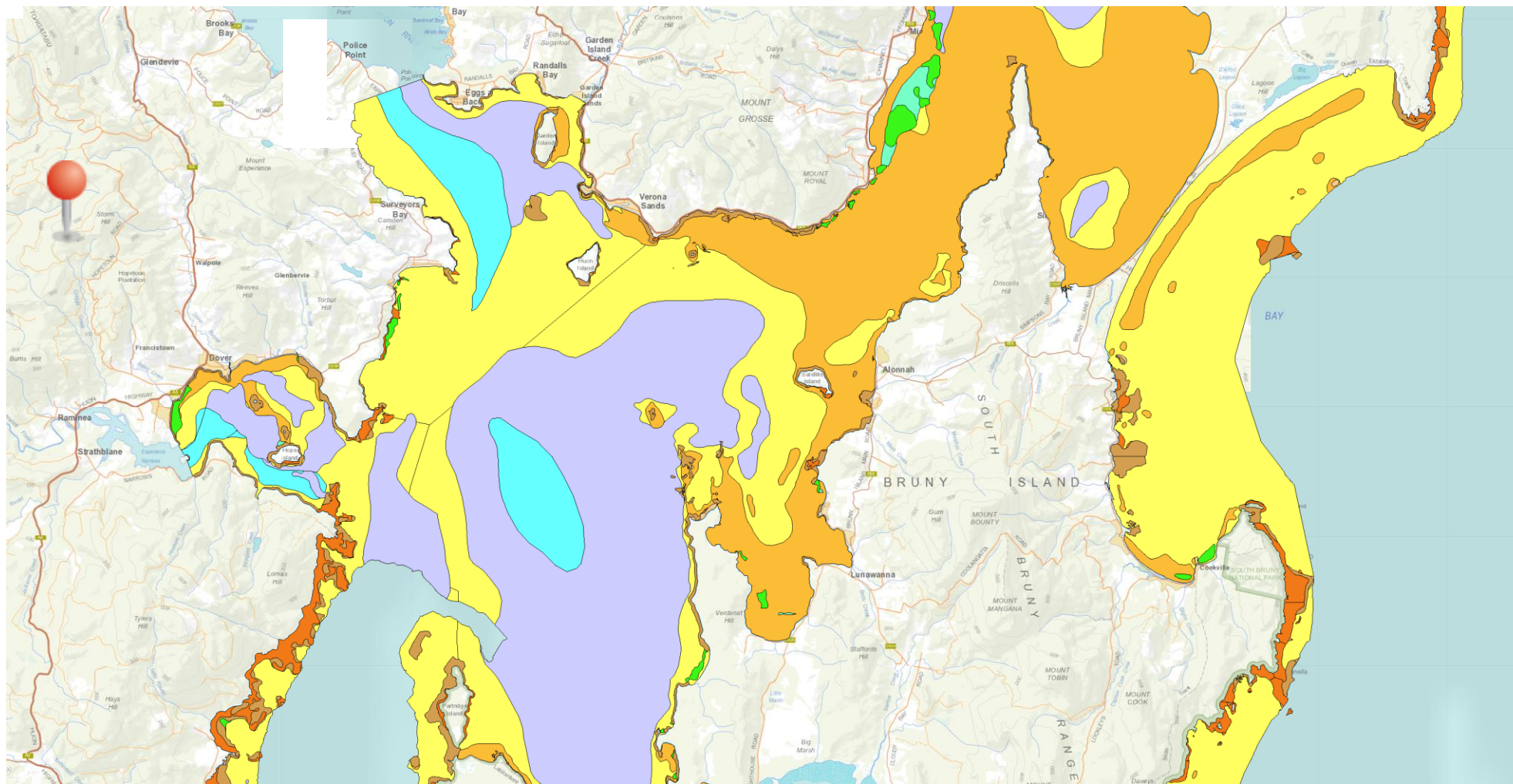


Towards improved marine spatial management for conservation values in Tasmania





Terrestrial vs Marine land and sea spatial management tools in Tasmania- Very few marine tools relative to land- Need a wider range of tools to manage conservation values



www.thelist.tas.gov.au

Some Commonwealth approaches

Key Ecological Features
Biologically Important Areas
Key Natural Values

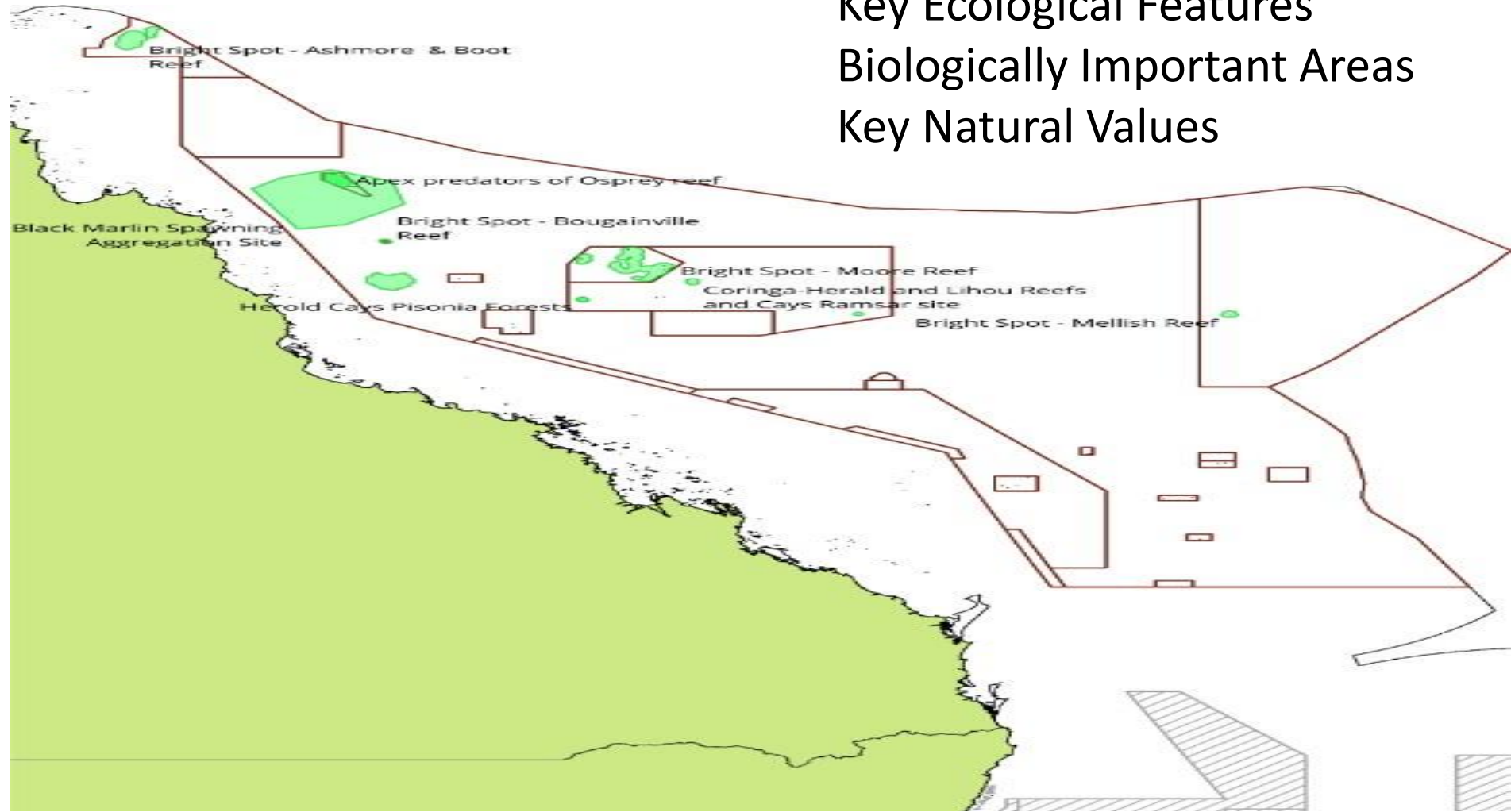
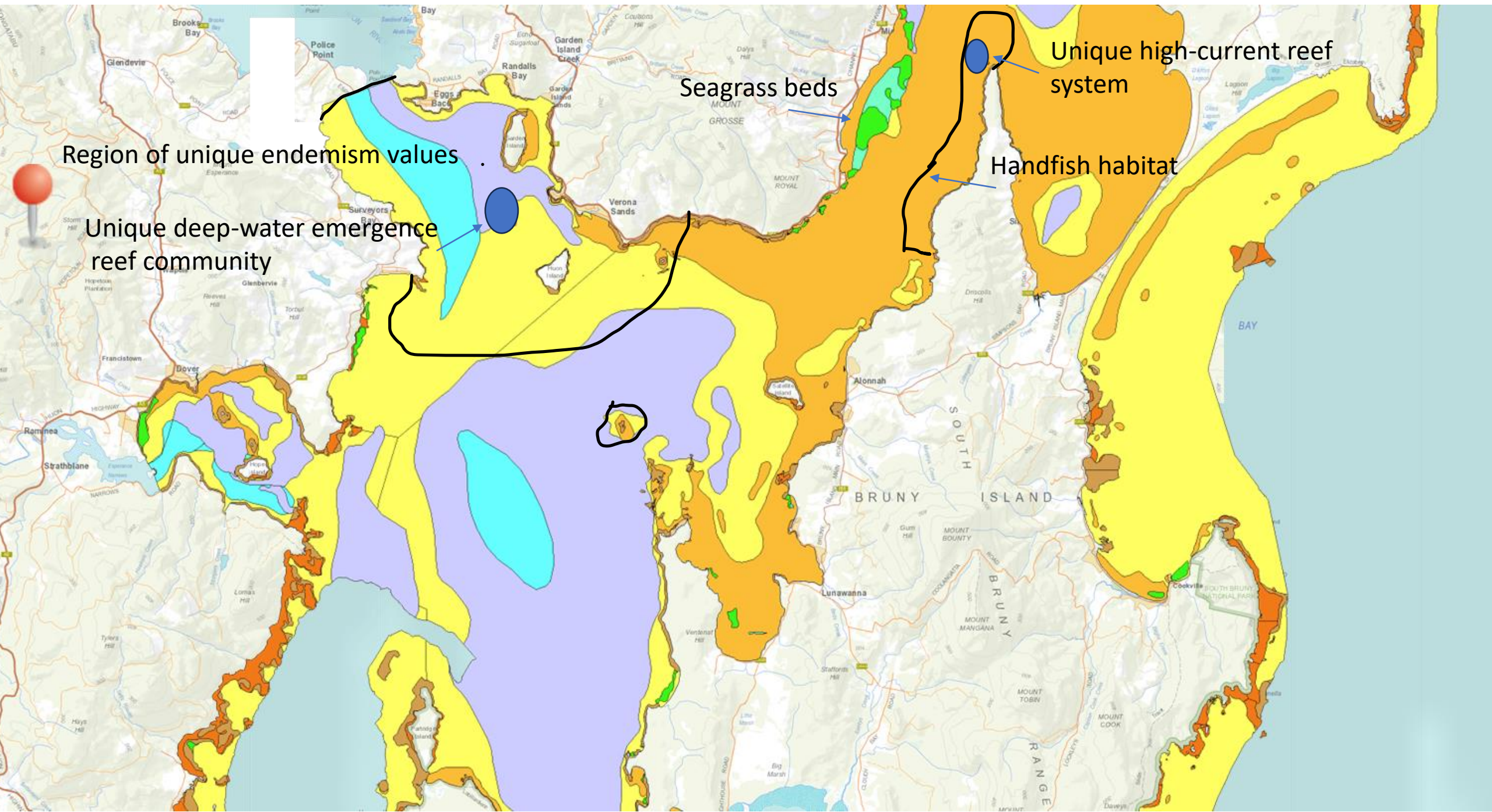


Figure D28: KNVs in the Coral Sea MP



Region of unique endemism values

Unique deep-water emergence reef community

Seagrass beds

Unique high-current reef system

Handfish habitat

Possible future steps

- Build on broad habitat maps to identify and spatially map key natural values (e.g. a spatially restricted TEPS habitat, a unique habitat, a “special” place/geomorphology)
- Incorporate that knowledge into a Marine Natural Values Atlas layer
- Develop a marine habitat management strategy for KNVs and broader habitats (i.e. what practices are compatible with values and what are not)