

Polling - Queensland Labor policies

October 2024

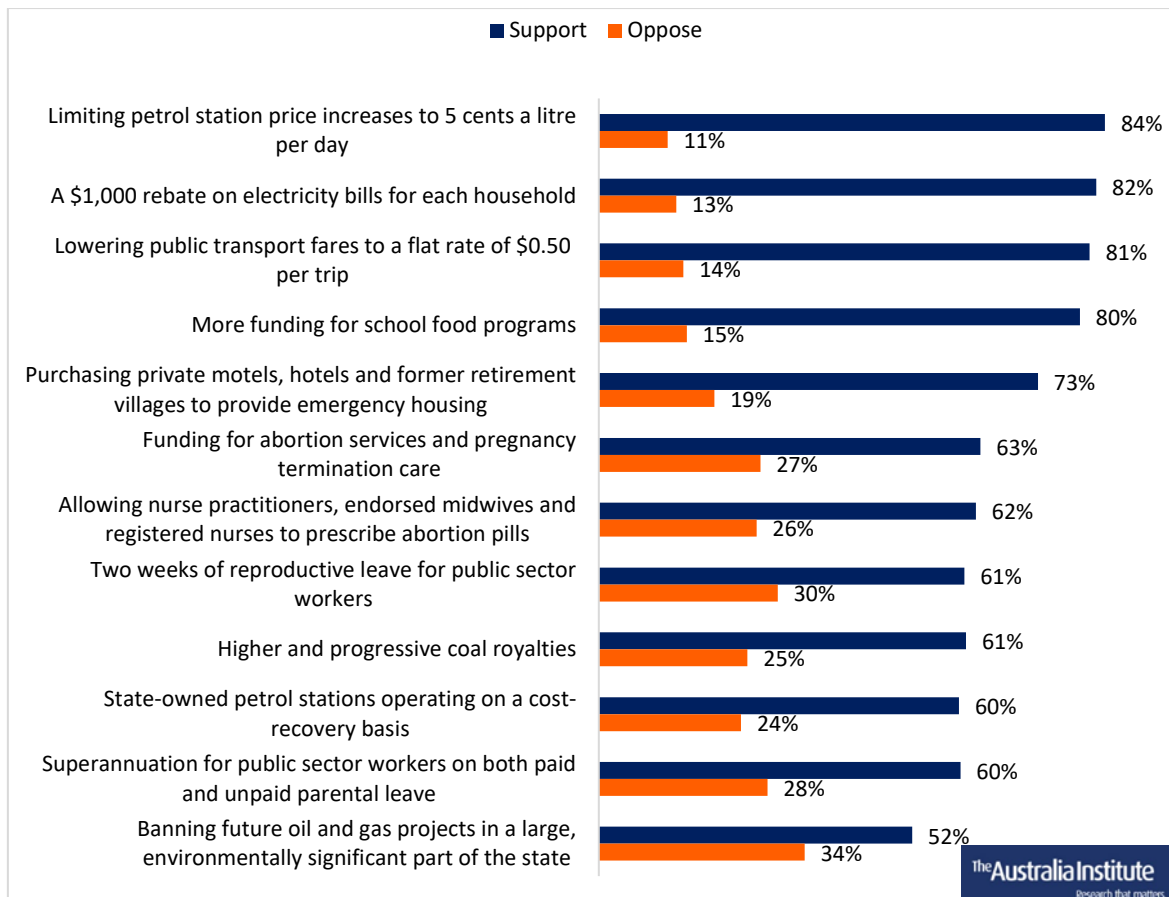
Key results

The Australia Institute surveyed a representative sample of 1,041 Queensland residents about whether they support 12 policies introduced by the Queensland Labor Government.

The results show that:

- Each of the 12 policies is supported by most Queenslanders.
- The net effect of each of the 12 policies is to make Queenslanders more likely to vote for the Labor Government.

Figure 1: Support for Queensland Labor Government’s policies



The Australia Institute has previously argued that the advantage of a federal system like Australia's is that other states and territories can adopt successful policies once they have been proven to work in one jurisdiction. This theory, which has been widely understood in the United States for almost a century, describes states and territories as "laboratories of democracy".¹

Australia Institute polling research finds that policies from the Australian Capital Territory, even ones that are novel or controversial, find strong support among other Australians.²

The Queensland Labor Government under premiers Annastacia Palaszczuk and Steven Miles has introduced or announced innovative, controversial policies. This offers another opportunity to test the laboratory of democracy theory, by confirming whether these policies are popular in the jurisdiction they are introduced and whether they would be popular if adopted in other jurisdictions around Australia.

Respondents in Queensland were presented with 12 policies that have been introduced or announced by the Queensland Labor Government, and asked to what extent they support or oppose the policies.

- Each of the 12 policies is supported by most Queenslanders.
- 10 of the 12 policies had more support than opposition from Queenslanders of all voting intentions.

Cost of living policies are the most popular among the policies presented to Queenslanders.

- **Limiting petrol station price increases to 5 cents a litre per day and banning petrol stations raising prices more than once a day** is the most popular policy, with almost six in seven (84%) Queenslanders supporting it.
- **A \$1,000 rebate on electricity bills for each household** has the support of four in five (82%) Queenslanders.
- Four in five Queenslanders (81%) support **lowering public transport fares to a flat rate of \$0.50 per trip.**
- Four in five (80%) support **more funding for school food programs.**
- Three in five (60%) support **state-owned petrol stations operating on a cost-recovery basis.**

¹ Browne (2019) *Canberra: Laboratory of democracy*, pp. 1, 4–5,

<https://australiainstitute.org.au/report/canberra-laboratory-of-democracy/>

² The Australia Institute (2024) *Polling – Australian attitudes to ACT policies*,

<https://australiainstitute.org.au/report/polling-australian-attitudes-to-act-policies/>

Abortion and reproduction policies receive support from three in five Queenslanders:

- 63% support **funding for abortion services and pregnancy termination care.**
- 62% support **allowing nurse practitioners, endorsed midwives and registered nurses to prescribe abortion pills.**
- 61% support **two weeks of reproductive leave for public sector workers.**
- 60% support **superannuation for public sector workers on both paid and unpaid leave.**

Other policies were also popular:

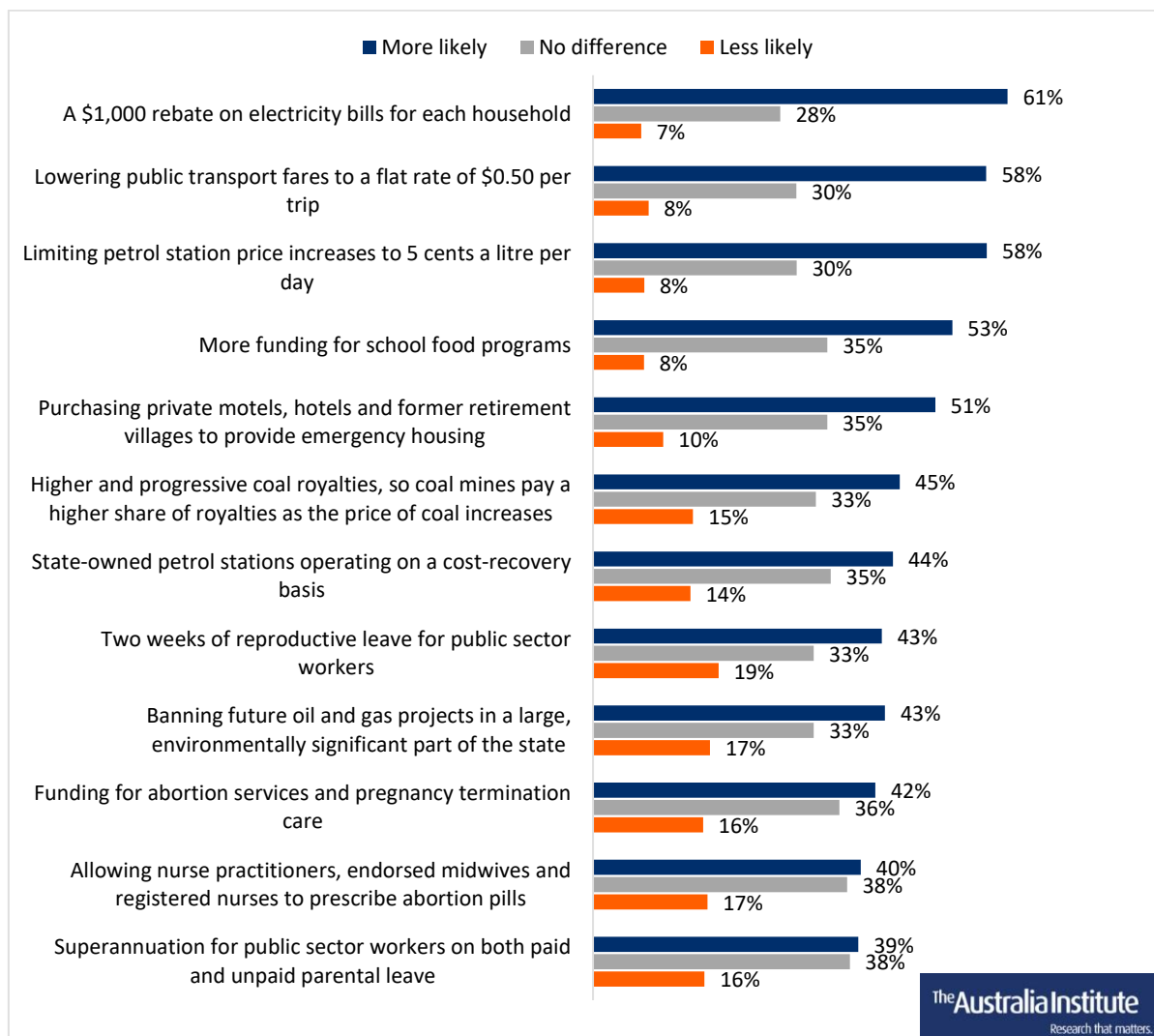
- Three in four Queenslanders (73%) support **purchasing private motels, hotels and former retirement villages to provide emergency housing.**
- Three in five Queenslanders (61%) support **higher and progressive coal royalties.**
- Half of Queenslanders (52%) support **banning future oil and gas projects in a large, environmentally significant part of the state**, compared to 34% who oppose.
 - This was the only policy where a majority of *any* voting intention opposed the policy: 50% of Coalition, 52% of One Nation and 51% of Katter's Australian Party voters are opposed.

Respondents were then told that the 12 policies have been implemented or announced by the Labor Government and were asked to what extent those policies make them more or less likely to vote for the Labor Government.

The introduction or announcement of all twelve policies make Queenslanders more likely than not to vote for Labor.

The four policies that most Queenslanders identified as making them more likely to vote for Labor are all cost of living related: an electricity rebate, 50 cent public transport fares, limiting petrol station price increases and more funding for school food programs.

Figure 2: Whether Labor policies make Queenslanders more likely to vote Labor



Method

Short disclosure statement

| | |
|--------------------------------------|--------------------------------------|
| Panel provider | Dynata |
| Research company | The Australia Institute |
| Client commissioning the research | NA |
| Fieldwork dates | 4 to 12 October 2024 |
| Mode of data collection | Online recruited from research panel |
| Target population | Queenslander adults aged 18+ |
| Sample size | 1,041 |
| Australian Polling Council compliant | Yes |
| Voting intention published | No |
| Long disclosure statement | See below |

Long disclosure statement

| | |
|--|--|
| Effective sample size after weighting applied | 1,028 |
| Margin of error associated with effective sample size | ±3% |
| Variables used in weighting | Age and gender, based on Australian Bureau of Statistics “National, state and territory population” data |
| Gender identity categorisation | Those who answered the gender identity question as “Non-binary”, “I use a different term”, or “Prefer not to answer” had their responses included with females for the purpose of reporting, due to constraints from weighting data availability |
| Weighting method used | Raking method |
| Full question text, responses categories and randomisation | See below |
| Source of online sample | Dynata’s online panel |
| Positioning of voting intention questions in questionnaire | Immediately after demographics, before policy questions |
| How were undecided voters handled? | Respondents who answered “Don’t know / Not sure” for voting intention were then asked a leaning question; these leanings are included in voting intention crosstabs |
| Method of calculating 2PP | N/A |
| Voting intention categorisation | Voting crosstabs show voting intentions for the Legislative Assembly “Other” refers to Independent/Other |
| Location results | Results are shown for Queensland only |



**Australian
Polling Council
Quality Mark**

Detailed results

No preceding questions in the poll are expected to have influenced the results of the questions published here.

To what extent do you support or oppose the following policies?

Higher and progressive coal royalties, so coal mines pay a higher share of royalties as the price of coal increases.

| | <i>Total</i> | <i>Male</i> | <i>Female</i> |
|------------------------------|--------------|-------------|---------------|
| Strongly support | 27% | 27% | 28% |
| Support | 33% | 34% | 33% |
| Oppose | 16% | 19% | 15% |
| Strongly oppose | 8% | 11% | 6% |
| Don't know / Not sure | 15% | 10% | 19% |

| | <i>Total</i> | <i>Labor</i> | <i>Coalition</i> | <i>Greens</i> | <i>One Nation</i> | <i>KAP</i> | <i>Other</i> |
|------------------------------|--------------|--------------|------------------|---------------|-------------------|------------|--------------|
| Strongly support | 27% | 36% | 16% | 46% | 18% | 9% | 25% |
| Support | 33% | 36% | 38% | 28% | 20% | 49% | 22% |
| Oppose | 16% | 14% | 20% | 10% | 24% | 23% | 13% |
| Strongly oppose | 8% | 1% | 15% | 5% | 15% | 5% | 5% |
| Don't know / Not sure | 15% | 12% | 11% | 11% | 22% | 14% | 36% |

Lowering public transport fares to a flat rate of \$0.50 per trip.

| | <i>Total</i> | <i>Male</i> | <i>Female</i> |
|------------------------------|--------------|-------------|---------------|
| Strongly support | 49% | 45% | 52% |
| Support | 32% | 33% | 31% |
| Oppose | 9% | 10% | 9% |
| Strongly oppose | 5% | 7% | 3% |
| Don't know / Not sure | 5% | 5% | 5% |

| | <i>Total</i> | <i>Labor</i> | <i>Coalition</i> | <i>Greens</i> | <i>One Nation</i> | <i>KAP</i> | <i>Other</i> |
|------------------------------|--------------|--------------|------------------|---------------|-------------------|------------|--------------|
| Strongly support | 49% | 61% | 36% | 62% | 45% | 46% | 41% |
| Support | 32% | 29% | 37% | 27% | 33% | 35% | 35% |
| Oppose | 9% | 6% | 15% | 6% | 4% | 4% | 5% |
| Strongly oppose | 5% | 2% | 8% | 3% | 8% | 10% | 5% |
| Don't know / Not sure | 5% | 2% | 4% | 3% | 10% | 5% | 14% |

More funding for school food programs.

| | <i>Total</i> | <i>Male</i> | <i>Female</i> |
|------------------------------|--------------|-------------|---------------|
| Strongly support | 36% | 30% | 43% |
| Support | 43% | 46% | 41% |
| Oppose | 10% | 12% | 9% |
| Strongly oppose | 4% | 6% | 3% |
| Don't know / Not sure | 6% | 7% | 5% |

| | <i>Total</i> | <i>Labor</i> | <i>Coalition</i> | <i>Greens</i> | <i>One Nation</i> | <i>KAP</i> | <i>Other</i> |
|------------------------------|--------------|--------------|------------------|---------------|-------------------|------------|--------------|
| Strongly support | 36% | 41% | 28% | 48% | 36% | 40% | 32% |
| Support | 43% | 43% | 48% | 36% | 38% | 42% | 43% |
| Oppose | 10% | 10% | 11% | 9% | 11% | 14% | 8% |
| Strongly oppose | 4% | 2% | 7% | 3% | 6% | 0% | 2% |
| Don't know / Not sure | 6% | 4% | 5% | 4% | 9% | 4% | 15% |

A \$1,000 rebate on electricity bills for each household.

| | <i>Total</i> | <i>Male</i> | <i>Female</i> |
|------------------------------|--------------|-------------|---------------|
| Strongly support | 53% | 47% | 59% |
| Support | 29% | 31% | 27% |
| Oppose | 9% | 11% | 7% |
| Strongly oppose | 4% | 6% | 2% |
| Don't know / Not sure | 5% | 5% | 5% |

| | <i>Total</i> | <i>Labor</i> | <i>Coalition</i> | <i>Greens</i> | <i>One Nation</i> | <i>KAP</i> | <i>Other</i> |
|------------------------------|--------------|--------------|------------------|---------------|-------------------|------------|--------------|
| Strongly support | 53% | 60% | 44% | 59% | 66% | 38% | 48% |
| Support | 29% | 29% | 33% | 24% | 22% | 34% | 31% |
| Oppose | 9% | 6% | 13% | 7% | 1% | 18% | 7% |
| Strongly oppose | 4% | 2% | 6% | 6% | 1% | 10% | 1% |
| Don't know / Not sure | 5% | 3% | 4% | 5% | 9% | 0% | 13% |

Funding for abortion services and pregnancy termination care.

| | <i>Total</i> | <i>Male</i> | <i>Female</i> |
|------------------------------|--------------|-------------|---------------|
| Strongly support | 27% | 21% | 33% |
| Support | 36% | 40% | 32% |
| Oppose | 15% | 16% | 15% |
| Strongly oppose | 11% | 13% | 9% |
| Don't know / Not sure | 10% | 9% | 11% |

| | <i>Total</i> | <i>Labor</i> | <i>Coalition</i> | <i>Greens</i> | <i>One Nation</i> | <i>KAP</i> | <i>Other</i> |
|------------------------------|--------------|--------------|------------------|---------------|-------------------|------------|--------------|
| Strongly support | 27% | 31% | 19% | 43% | 20% | 19% | 28% |
| Support | 36% | 41% | 37% | 33% | 29% | 40% | 24% |
| Oppose | 15% | 14% | 20% | 12% | 8% | 27% | 12% |
| Strongly oppose | 11% | 6% | 14% | 8% | 28% | 9% | 15% |
| Don't know / Not sure | 10% | 9% | 10% | 4% | 15% | 5% | 21% |

Two weeks of reproductive leave for public sector workers, including for IVF, cancer screenings, vasectomies, hysterectomies and endometriosis.

| | <i>Total</i> | <i>Male</i> | <i>Female</i> |
|------------------------------|--------------|-------------|---------------|
| Strongly support | 29% | 21% | 36% |
| Support | 32% | 32% | 32% |
| Oppose | 18% | 21% | 15% |
| Strongly oppose | 12% | 17% | 7% |
| Don't know / Not sure | 10% | 9% | 10% |

| | <i>Total</i> | <i>Labor</i> | <i>Coalition</i> | <i>Greens</i> | <i>One Nation</i> | <i>KAP</i> | <i>Other</i> |
|------------------------------|--------------|--------------|------------------|---------------|-------------------|------------|--------------|
| Strongly support | 29% | 36% | 21% | 40% | 26% | 9% | 22% |
| Support | 32% | 34% | 29% | 37% | 22% | 45% | 31% |
| Oppose | 18% | 15% | 23% | 12% | 17% | 23% | 12% |
| Strongly oppose | 12% | 5% | 18% | 6% | 23% | 24% | 10% |
| Don't know / Not sure | 10% | 9% | 9% | 5% | 12% | 0% | 25% |

Superannuation for public sector workers on both paid and unpaid parental leave.

| | <i>Total</i> | <i>Male</i> | <i>Female</i> |
|------------------------------|--------------|-------------|---------------|
| Strongly support | 25% | 19% | 32% |
| Support | 35% | 37% | 32% |
| Oppose | 17% | 20% | 14% |
| Strongly oppose | 11% | 13% | 10% |
| Don't know / Not sure | 12% | 11% | 13% |

| | <i>Total</i> | <i>Labor</i> | <i>Coalition</i> | <i>Greens</i> | <i>One Nation</i> | <i>KAP</i> | <i>Other</i> |
|------------------------------|--------------|--------------|------------------|---------------|-------------------|------------|--------------|
| Strongly support | 25% | 31% | 17% | 38% | 25% | 13% | 18% |
| Support | 35% | 38% | 32% | 38% | 30% | 35% | 32% |
| Oppose | 17% | 13% | 23% | 11% | 13% | 29% | 10% |
| Strongly oppose | 11% | 7% | 17% | 5% | 14% | 19% | 11% |
| Don't know / Not sure | 12% | 10% | 11% | 8% | 19% | 5% | 28% |

Allowing nurse practitioners, endorsed midwives and registered nurses to prescribe abortion pills, if they have done extra training.

| | <i>Total</i> | <i>Male</i> | <i>Female</i> |
|------------------------------|--------------|-------------|---------------|
| Strongly support | 28% | 23% | 34% |
| Support | 34% | 35% | 33% |
| Oppose | 15% | 18% | 12% |
| Strongly oppose | 12% | 13% | 10% |
| Don't know / Not sure | 11% | 12% | 11% |

| | <i>Total</i> | <i>Labor</i> | <i>Coalition</i> | <i>Greens</i> | <i>One Nation</i> | <i>KAP</i> | <i>Other</i> |
|------------------------------|--------------|--------------|------------------|---------------|-------------------|------------|--------------|
| Strongly support | 28% | 36% | 21% | 35% | 24% | 18% | 24% |
| Support | 34% | 38% | 35% | 32% | 25% | 40% | 27% |
| Oppose | 15% | 11% | 18% | 14% | 14% | 28% | 11% |
| Strongly oppose | 12% | 7% | 15% | 11% | 13% | 10% | 13% |
| Don't know / Not sure | 11% | 8% | 11% | 7% | 24% | 5% | 24% |

Banning future oil and gas projects in a large, environmentally significant part of the state.

| | <i>Total</i> | <i>Male</i> | <i>Female</i> |
|------------------------------|--------------|-------------|---------------|
| Strongly support | 25% | 23% | 28% |
| Support | 27% | 25% | 28% |
| Oppose | 20% | 21% | 19% |
| Strongly oppose | 14% | 21% | 8% |
| Don't know / Not sure | 14% | 11% | 17% |

| | <i>Total</i> | <i>Labor</i> | <i>Coalition</i> | <i>Greens</i> | <i>One Nation</i> | <i>KAP</i> | <i>Other</i> |
|------------------------------|--------------|--------------|------------------|---------------|-------------------|------------|--------------|
| Strongly support | 25% | 32% | 13% | 50% | 14% | 5% | 22% |
| Support | 27% | 34% | 24% | 27% | 8% | 36% | 23% |
| Oppose | 20% | 17% | 24% | 15% | 25% | 22% | 17% |
| Strongly oppose | 14% | 4% | 26% | 2% | 27% | 28% | 8% |
| Don't know / Not sure | 14% | 13% | 13% | 5% | 26% | 9% | 30% |

Purchasing private motels, hotels and former retirement villages to provide emergency housing for those at risk of homelessness.

| | <i>Total</i> | <i>Male</i> | <i>Female</i> |
|------------------------------|--------------|-------------|---------------|
| Strongly support | 33% | 25% | 40% |
| Support | 40% | 41% | 39% |
| Oppose | 12% | 14% | 10% |
| Strongly oppose | 7% | 11% | 4% |
| Don't know / Not sure | 8% | 9% | 7% |

| | <i>Total</i> | Labor | Coalition | Greens | One Nation | KAP | Other |
|------------------------------|--------------|-------|-----------|--------|------------|-----|-------|
| Strongly support | 33% | 37% | 22% | 49% | 30% | 26% | 35% |
| Support | 40% | 45% | 45% | 29% | 31% | 37% | 29% |
| Oppose | 12% | 8% | 15% | 11% | 12% | 27% | 9% |
| Strongly oppose | 7% | 3% | 11% | 6% | 13% | 4% | 8% |
| Don't know / Not sure | 8% | 8% | 6% | 5% | 13% | 5% | 19% |

State-owned petrol stations operating on a cost-recovery basis.

| | <i>Total</i> | Male | Female |
|------------------------------|--------------|------|--------|
| Strongly support | 27% | 25% | 29% |
| Support | 33% | 32% | 34% |
| Oppose | 14% | 16% | 13% |
| Strongly oppose | 9% | 13% | 5% |
| Don't know / Not sure | 17% | 14% | 20% |

| | <i>Total</i> | Labor | Coalition | Greens | One Nation | KAP | Other |
|------------------------------|--------------|-------|-----------|--------|------------|-----|-------|
| Strongly support | 27% | 35% | 19% | 35% | 25% | 32% | 19% |
| Support | 33% | 33% | 33% | 36% | 21% | 23% | 36% |
| Oppose | 14% | 13% | 17% | 12% | 13% | 18% | 11% |
| Strongly oppose | 9% | 4% | 15% | 6% | 13% | 19% | 5% |
| Don't know / Not sure | 17% | 15% | 15% | 12% | 29% | 9% | 30% |

Limiting petrol station price increases to 5 cents a litre per day and a ban on petrol stations raising prices more than once a day.

| | <i>Total</i> | Male | Female |
|------------------------------|--------------|------|--------|
| Strongly support | 52% | 48% | 57% |
| Support | 32% | 34% | 29% |
| Oppose | 8% | 9% | 6% |
| Strongly oppose | 4% | 5% | 3% |
| Don't know / Not sure | 5% | 4% | 5% |

| | <i>Total</i> | <i>Labor</i> | <i>Coalition</i> | <i>Greens</i> | <i>One Nation</i> | <i>KAP</i> | <i>Other</i> |
|------------------------------|--------------|--------------|------------------|---------------|-------------------|------------|--------------|
| Strongly support | 52% | 56% | 49% | 54% | 57% | 50% | 47% |
| Support | 32% | 32% | 35% | 25% | 28% | 31% | 29% |
| Oppose | 8% | 6% | 7% | 12% | 4% | 14% | 9% |
| Strongly oppose | 4% | 3% | 5% | 4% | 1% | 5% | 4% |
| Don't know / Not sure | 5% | 3% | 4% | 5% | 9% | 0% | 10% |

These are policies that have been implemented or announced by the Labor Government.

To what extent did these policies make you more or less likely to vote for the Labor Government?

Higher and progressive coal royalties, so coal mines pay a higher share of royalties as the price of coal increases.

| | <i>Total</i> | <i>Male</i> | <i>Female</i> |
|------------------------------|--------------|-------------|---------------|
| Much more likely | 21% | 21% | 20% |
| More likely | 25% | 25% | 24% |
| No difference | 33% | 30% | 36% |
| Less likely | 7% | 9% | 5% |
| Much less likely | 7% | 10% | 5% |
| Don't know / Not sure | 7% | 4% | 10% |

| | <i>Total</i> | <i>Labor</i> | <i>Coalition</i> | <i>Greens</i> | <i>One Nation</i> | <i>KAP</i> | <i>Other</i> |
|------------------------------|--------------|--------------|------------------|---------------|-------------------|------------|--------------|
| Much more likely | 21% | 32% | 10% | 31% | 10% | 8% | 16% |
| More likely | 25% | 33% | 18% | 32% | 11% | 27% | 22% |
| No difference | 33% | 26% | 43% | 23% | 37% | 23% | 32% |
| Less likely | 7% | 3% | 9% | 7% | 15% | 23% | 4% |
| Much less likely | 7% | 1% | 15% | 2% | 12% | 15% | 5% |
| Don't know / Not sure | 7% | 5% | 5% | 5% | 15% | 4% | 21% |

Lowering public transport fares to a flat rate of \$0.50 per trip.

| | <i>Total</i> | <i>Male</i> | <i>Female</i> |
|------------------------------|--------------|-------------|---------------|
| Much more likely | 31% | 26% | 36% |
| More likely | 27% | 28% | 25% |
| No difference | 30% | 31% | 29% |
| Less likely | 4% | 5% | 3% |
| Much less likely | 4% | 6% | 3% |
| Don't know / Not sure | 4% | 3% | 4% |

| | <i>Total</i> | <i>Labor</i> | <i>Coalition</i> | <i>Greens</i> | <i>One Nation</i> | <i>KAP</i> | <i>Other</i> |
|------------------------------|--------------|--------------|------------------|---------------|-------------------|------------|--------------|
| Much more likely | 31% | 45% | 16% | 49% | 24% | 22% | 27% |
| More likely | 27% | 35% | 24% | 21% | 23% | 22% | 18% |
| No difference | 30% | 16% | 43% | 22% | 34% | 46% | 33% |
| Less likely | 4% | 2% | 4% | 4% | 7% | 9% | 5% |
| Much less likely | 4% | 0% | 10% | 1% | 4% | 0% | 1% |
| Don't know / Not sure | 4% | 2% | 2% | 3% | 7% | 0% | 17% |

More funding for school food programs.

| | <i>Total</i> | <i>Male</i> | <i>Female</i> |
|------------------------------|--------------|-------------|---------------|
| Much more likely | 23% | 20% | 27% |
| More likely | 30% | 27% | 32% |
| No difference | 35% | 38% | 31% |
| Less likely | 4% | 5% | 3% |
| Much less likely | 4% | 5% | 2% |
| Don't know / Not sure | 5% | 5% | 5% |

| | <i>Total</i> | <i>Labor</i> | <i>Coalition</i> | <i>Greens</i> | <i>One Nation</i> | <i>KAP</i> | <i>Other</i> |
|------------------------------|--------------|--------------|------------------|---------------|-------------------|------------|--------------|
| Much more likely | 23% | 35% | 13% | 28% | 15% | 26% | 22% |
| More likely | 30% | 36% | 24% | 37% | 21% | 31% | 24% |
| No difference | 35% | 24% | 45% | 25% | 53% | 33% | 32% |
| Less likely | 4% | 2% | 6% | 5% | 0% | 9% | 2% |
| Much less likely | 4% | 0% | 9% | 1% | 1% | 0% | 1% |
| Don't know / Not sure | 5% | 2% | 4% | 3% | 11% | 0% | 18% |

A \$1,000 rebate on electricity bills for each household.

| | <i>Total</i> | <i>Male</i> | <i>Female</i> |
|------------------------------|--------------|-------------|---------------|
| Much more likely | 33% | 28% | 38% |
| More likely | 28% | 27% | 29% |
| No difference | 28% | 32% | 24% |
| Less likely | 4% | 5% | 3% |
| Much less likely | 3% | 5% | 1% |
| Don't know / Not sure | 4% | 3% | 5% |

| | <i>Total</i> | <i>Labor</i> | <i>Coalition</i> | <i>Greens</i> | <i>One Nation</i> | <i>KAP</i> | <i>Other</i> |
|------------------------------|--------------|--------------|------------------|---------------|-------------------|------------|--------------|
| Much more likely | 33% | 50% | 18% | 40% | 30% | 18% | 26% |
| More likely | 28% | 31% | 26% | 32% | 22% | 49% | 23% |
| No difference | 28% | 14% | 40% | 21% | 37% | 19% | 33% |
| Less likely | 4% | 2% | 7% | 3% | 4% | 14% | 0% |
| Much less likely | 3% | 0% | 7% | 1% | 1% | 0% | 1% |
| Don't know / Not sure | 4% | 3% | 2% | 3% | 7% | 0% | 17% |

Funding for abortion services and pregnancy termination care.

| | <i>Total</i> | <i>Male</i> | <i>Female</i> |
|------------------------------|--------------|-------------|---------------|
| Much more likely | 18% | 14% | 22% |
| More likely | 24% | 23% | 24% |
| No difference | 36% | 38% | 34% |
| Less likely | 6% | 8% | 5% |
| Much less likely | 10% | 13% | 7% |
| Don't know / Not sure | 6% | 4% | 7% |

| | <i>Total</i> | <i>Labor</i> | <i>Coalition</i> | <i>Greens</i> | <i>One Nation</i> | <i>KAP</i> | <i>Other</i> |
|------------------------------|--------------|--------------|------------------|---------------|-------------------|------------|--------------|
| Much more likely | 18% | 27% | 9% | 25% | 16% | 18% | 14% |
| More likely | 24% | 32% | 17% | 29% | 17% | 27% | 13% |
| No difference | 36% | 28% | 46% | 29% | 34% | 41% | 41% |
| Less likely | 6% | 4% | 9% | 6% | 8% | 9% | 4% |
| Much less likely | 10% | 5% | 15% | 7% | 15% | 5% | 7% |
| Don't know / Not sure | 6% | 4% | 4% | 4% | 10% | 0% | 20% |

Two weeks of reproductive leave for public sector workers, including for IVF, cancer screenings, vasectomies, hysterectomies and endometriosis.

| | <i>Total</i> | <i>Male</i> | <i>Female</i> |
|------------------------------|--------------|-------------|---------------|
| Much more likely | 19% | 15% | 24% |
| More likely | 23% | 21% | 26% |
| No difference | 33% | 35% | 31% |
| Less likely | 10% | 11% | 8% |
| Much less likely | 9% | 13% | 4% |
| Don't know / Not sure | 6% | 5% | 7% |

| | <i>Total</i> | <i>Labor</i> | <i>Coalition</i> | <i>Greens</i> | <i>One Nation</i> | <i>KAP</i> | <i>Other</i> |
|------------------------------|--------------|--------------|------------------|---------------|-------------------|------------|--------------|
| Much more likely | 19% | 28% | 10% | 28% | 19% | 4% | 14% |
| More likely | 23% | 33% | 16% | 31% | 12% | 39% | 13% |
| No difference | 33% | 26% | 41% | 24% | 30% | 28% | 40% |
| Less likely | 10% | 8% | 11% | 8% | 12% | 24% | 7% |
| Much less likely | 9% | 1% | 18% | 3% | 15% | 5% | 6% |
| Don't know / Not sure | 6% | 5% | 4% | 5% | 11% | 0% | 20% |

Superannuation for public sector workers on both paid and unpaid parental leave.

| | <i>Total</i> | <i>Male</i> | <i>Female</i> |
|------------------------------|--------------|-------------|---------------|
| Much more likely | 17% | 13% | 21% |
| More likely | 22% | 19% | 26% |
| No difference | 38% | 42% | 34% |
| Less likely | 8% | 8% | 8% |
| Much less likely | 8% | 12% | 5% |
| Don't know / Not sure | 6% | 6% | 7% |

| | <i>Total</i> | <i>Labor</i> | <i>Coalition</i> | <i>Greens</i> | <i>One Nation</i> | <i>KAP</i> | <i>Other</i> |
|------------------------------|--------------|--------------|------------------|---------------|-------------------|------------|--------------|
| Much more likely | 17% | 25% | 10% | 21% | 16% | 4% | 12% |
| More likely | 22% | 29% | 15% | 30% | 11% | 35% | 24% |
| No difference | 38% | 34% | 44% | 33% | 33% | 38% | 38% |
| Less likely | 8% | 5% | 11% | 6% | 16% | 23% | 2% |
| Much less likely | 8% | 2% | 16% | 6% | 10% | 0% | 4% |
| Don't know / Not sure | 6% | 5% | 4% | 4% | 14% | 0% | 20% |

Allowing nurse practitioners, endorsed midwives and registered nurses to prescribe abortion pills, if they have done extra training.

| | <i>Total</i> | <i>Male</i> | <i>Female</i> |
|------------------------------|--------------|-------------|---------------|
| Much more likely | 19% | 14% | 23% |
| More likely | 21% | 17% | 25% |
| No difference | 38% | 43% | 33% |
| Less likely | 8% | 10% | 6% |
| Much less likely | 9% | 11% | 7% |
| Don't know / Not sure | 6% | 5% | 7% |

| | <i>Total</i> | <i>Labor</i> | <i>Coalition</i> | <i>Greens</i> | <i>One Nation</i> | <i>KAP</i> | <i>Other</i> |
|------------------------------|--------------|--------------|------------------|---------------|-------------------|------------|--------------|
| Much more likely | 19% | 27% | 11% | 25% | 15% | 18% | 15% |
| More likely | 21% | 27% | 14% | 30% | 19% | 21% | 12% |
| No difference | 38% | 33% | 44% | 28% | 33% | 47% | 41% |
| Less likely | 8% | 5% | 12% | 6% | 9% | 10% | 8% |
| Much less likely | 9% | 4% | 15% | 5% | 11% | 5% | 6% |
| Don't know / Not sure | 6% | 5% | 4% | 6% | 12% | 0% | 17% |

Banning future oil and gas projects in a large, environmentally significant part of the state.

| | <i>Total</i> | <i>Male</i> | <i>Female</i> |
|------------------------------|--------------|-------------|---------------|
| Much more likely | 20% | 18% | 22% |
| More likely | 23% | 22% | 24% |
| No difference | 33% | 33% | 32% |
| Less likely | 7% | 7% | 7% |
| Much less likely | 10% | 14% | 6% |
| Don't know / Not sure | 7% | 5% | 9% |

| | <i>Total</i> | <i>Labor</i> | <i>Coalition</i> | <i>Greens</i> | <i>PHON</i> | <i>One Nation</i> | <i>Other</i> |
|------------------------------|--------------|--------------|------------------|---------------|-------------|-------------------|--------------|
| Much more likely | 20% | 29% | 9% | 40% | 5% | 9% | 16% |
| More likely | 23% | 30% | 17% | 26% | 15% | 40% | 21% |
| No difference | 33% | 28% | 42% | 22% | 33% | 23% | 33% |
| Less likely | 7% | 5% | 10% | 5% | 12% | 9% | 1% |
| Much less likely | 10% | 3% | 19% | 2% | 20% | 14% | 2% |
| Don't know / Not sure | 7% | 6% | 3% | 4% | 15% | 4% | 27% |

Purchasing private motels, hotels and former retirement villages to provide emergency housing for those at risk of homelessness.

| | <i>Total</i> | <i>Male</i> | <i>Female</i> |
|------------------------------|--------------|-------------|---------------|
| Much more likely | 21% | 18% | 24% |
| More likely | 30% | 28% | 32% |
| No difference | 35% | 36% | 33% |
| Less likely | 6% | 8% | 4% |
| Much less likely | 5% | 7% | 2% |
| Don't know / Not sure | 5% | 3% | 6% |

| | <i>Total</i> | <i>Labor</i> | <i>Coalition</i> | <i>Greens</i> | <i>PHON</i> | <i>One Nation</i> | <i>Other</i> |
|------------------------------|--------------|--------------|------------------|---------------|-------------|-------------------|--------------|
| Much more likely | 21% | 28% | 11% | 31% | 18% | 18% | 22% |
| More likely | 30% | 38% | 24% | 33% | 19% | 36% | 25% |
| No difference | 35% | 27% | 44% | 27% | 42% | 23% | 32% |
| Less likely | 6% | 3% | 8% | 3% | 8% | 23% | 1% |
| Much less likely | 5% | 1% | 11% | 2% | 4% | 0% | 1% |
| Don't know / Not sure | 5% | 3% | 2% | 4% | 9% | 0% | 19% |

State-owned petrol stations operating on a cost-recovery basis.

| | <i>Total</i> | <i>Male</i> | <i>Female</i> |
|------------------------------|--------------|-------------|---------------|
| Much more likely | 19% | 16% | 23% |
| More likely | 25% | 24% | 26% |
| No difference | 35% | 35% | 35% |
| Less likely | 8% | 10% | 5% |
| Much less likely | 7% | 10% | 4% |
| Don't know / Not sure | 6% | 5% | 7% |

| | <i>Total</i> | <i>Labor</i> | <i>Coalition</i> | <i>Greens</i> | <i>One Nation</i> | <i>KAP</i> | <i>Other</i> |
|------------------------------|--------------|--------------|------------------|---------------|-------------------|------------|--------------|
| Much more likely | 19% | 28% | 12% | 22% | 14% | 18% | 20% |
| More likely | 25% | 29% | 19% | 32% | 19% | 40% | 19% |
| No difference | 35% | 29% | 42% | 31% | 37% | 33% | 34% |
| Less likely | 8% | 5% | 11% | 5% | 14% | 0% | 5% |
| Much less likely | 7% | 2% | 13% | 6% | 6% | 4% | 2% |
| Don't know / Not sure | 6% | 6% | 3% | 4% | 10% | 5% | 20% |

Limiting petrol station price increases to 5 cents a litre per day and a ban on petrol stations raising prices more than once a day.

| | <i>Total</i> | <i>Male</i> | <i>Female</i> |
|------------------------------|--------------|-------------|---------------|
| Much more likely | 27% | 25% | 29% |
| More likely | 31% | 28% | 34% |
| No difference | 30% | 33% | 27% |
| Less likely | 5% | 6% | 4% |
| Much less likely | 3% | 4% | 1% |
| Don't know / Not sure | 4% | 3% | 5% |

| | <i>Total</i> | <i>Labor</i> | <i>Coalition</i> | <i>Greens</i> | <i>One Nation</i> | <i>KAP</i> | <i>Other</i> |
|------------------------------|--------------|--------------|------------------|---------------|-------------------|------------|--------------|
| Much more likely | 27% | 41% | 13% | 30% | 31% | 14% | 26% |
| More likely | 31% | 36% | 28% | 35% | 25% | 36% | 28% |
| No difference | 30% | 18% | 44% | 23% | 32% | 32% | 26% |
| Less likely | 5% | 3% | 6% | 8% | 4% | 18% | 1% |
| Much less likely | 3% | 0% | 6% | 1% | 1% | 0% | 1% |
| Don't know / Not sure | 4% | 3% | 2% | 4% | 7% | 0% | 18% |